



REGISTRATION BROCHURE

Risk Management: today's experiences, tomorrow's advantage

8th Annual RMIA Conference

20–22 November 2011 | Crown Entertainment Complex, Melbourne

Earlybird registration:
 Register by 14 October 2011

Accommodation bookings:
 Required by 12 October 2011

Register online at
www.rmiaconference.com

Presented in association with:



Platinum sponsors



Platinum sponsors



Leadership, knowledge, solutions... worldwide

As the world's leading insurance broker and strategic risk advisor, Marsh is devoted to finding the opportunity in risk. We apply a rigorous, diagnostic, total-cost-of-risk approach that helps our clients embrace risk as a core element of their strategy. Our services range from risk identification and assessment, to risk quantification and prioritisation, to risk mitigation and financing.

Marsh has over 1,000 employees across Australia and 25,000 employees in 100 countries worldwide.

In 2011, Marsh in Australia was named Large Broker of the Year, for the fourth consecutive year, by the Australia New Zealand Institute of Insurance and Finance.

Marsh is a proud supporter of the annual RMIA Conference.

marsh.com.au



Welcome to a new era in Risk Management Software!

RiskWare is an award winning Enterprise Risk Intelligence (ERI) software solution comprising of 10 tightly integrated modules; Corporate Governance, Risk Management, Compliance, Business Continuity, Incident Management, Health & Safety, Environmental, Audit Management, Claims Management and Risk Analytics.

RiskWare complies with a number of key standards, including AS/NZS ISO 31000:2009, AS 3806, AS/NZ 4801 and ISO 14001.

RiskWare consolidates disparate, loosely integrated and often archaic existing applications with one web-enabled solution to help you break down the silos in your organisation by integrating all areas of risk.

Product site: riskware.com.au
Corporate site: pansoftware.com.au

PAN Software Pty. Ltd.
Level 1, 123 Camberwell Road
East Hawthorn, VIC 3123
Australia
T: +61 3 9811 9930
E: sales@pansoftware.com.au



RMSS is a leading provider of enterprise risk intelligence solutions integrating all key areas of risk, claims, compliance and event management across an organisation.

RMSS suite incorporates specific patented technologies and capabilities which allow for multiple master risk categories, each with unique terminology and prescriptive workflows, within a single software framework. This provides an aggregated view across all master risk management and compliance processes delivering true enterprise risk management.

Out-of-the-box, RMSS solutions facilitate compliance with multiple Australian and International standards such as: AS/NZS 4360, AS/NZS ISO 31000:2009, AS 3806:2006, Basel II and COSO. The suite also comprises a 'wizard' driven customisation tool to integrate with existing business processes and risk management models thereby reducing change management to a minimum.

Our diverse customer base is made up of a range of industries including many of Australia's largest corporations and government organisations.

Visit www.rmss.com.au or call +61 7 3252 1400 for more information about our enterprise risk intelligence solutions or to request a demonstration.

Bronze sponsors





Sharon Aitken
RMIA
President

Invitation to attend – RMIA President

Friends... Please join us at the RMIA 2011 Risk Management Conference in Melbourne.

Take the time to reflect on whether your organisation is effectively managing risk? What would the impact be if it was not?

The RMIA 2011 risk management conference provides a 'line-up' of excellence in risk management expertise to help you answer these kinds of questions. Join more than 650 risk professionals from around the Asia Pacific at the 8th Annual RMIA Conference. This event will bring together fresh ideas, relevant case studies and best practices in risk management.

The RMIA conference will provide the most credible content you will find at any conference on risk management this year.

- Add value to your career by opening up your perspective
- Investigate what's happening around the world
- Apply strategies from current case studies to what you do every day
- Connect with a remarkable community of risk professionals — who are open and interested in connecting with you

The 8th Annual RMIA Conference: 'Today's Experience, Tomorrow's Advantage' will be held in Melbourne on 20-22 November 2011 at the Crown Entertainment Complex. We invite you to join more than 650 risk professionals to learn about the latest trends, issues and best practices in risk management. You'll have access to more than 40 conference sessions organised into five streams and presented by leaders who will inspire our industry and contribute to the development of risk professionals across Australasia.

The conference includes advanced workshops and master classes held on Sunday 20 November. Networking events include the welcome reception, the business breakfast briefing and conference gala dinner, as well as coffee breaks, lunches and happy hours held in the trade exhibition.

Please do not miss out on this exciting opportunity to be part of something very special.

Be informed & stay connected.

ORGANISING COMMITTEE

8th Annual RMIA Conference committee

Grant Whitehorn	Conference Director (RMIA)
Chris Douglas	Technical Director (RMIA)
Greg d'Arville	Moderator (RMIA)
Peter Napier	Concurrent Speaker & Session Chair Liaison (RMIA)
Sharon Aitken	RMIA President & VIP Liaison (RMIA, ex-official)
Karine Beck	Conference Manager
Robyn Boak	Sponsorship & Exhibition Manager

ABOUT RMIA CONFERENCE

The 8th Annual RMIA Conference is the pre-eminent learning and professional development event for risk management professionals in the Asia Pacific region and attracts more than 550 delegates. This year, RMIA members identified key issues they face in managing risk and that feedback has helped to shape the 2011 conference.



WHO SHOULD ATTEND?

Delegates represent a broad cross-section of government, corporate & NFP sector commerce and industry with risk management practitioners from many of Australia's leading corporations in attendance.

It is anticipated that over 550 delegates from the following backgrounds are expected to attend:

- Strategic risk management executives and practitioners eg: CRO's, GM Risk, etc
- Senior business managers, CEO's, CFO's, etc
- Operational risk management technicians
- National and multinational private sector enterprises
- Federal and state government owned corporations and agencies and local government
- Risk management service providers.

REASONS TO ATTEND:

- It is the most relevant professional development event available to risk management practitioners. This event covers ALL aspects of risk management.
- It is incredible value for money. Your registration fee is subsidised by sponsors and exhibitors. In addition dozens of speakers, chairs and others have given their time free to provide a top level educational experience.
- Meet more colleagues over the conference days than you could in a year and all in one place! Don't forget your business cards!
- Have a voice in shaping the future of the risk management discipline.
- Hear stimulating and inspiring speakers, with an emphasis on key issues, current and future trends, and how to perform at a higher level.
- Attend detailed breakout sessions facilitated by experts and have the

opportunity to ask questions relevant to your own circumstances, and listen to responses to other participants' questions.

- Have ample opportunity to revitalise existing networks and establish new ones through the exciting business and social program.
- Find out what is new or emerging in the industry by talking to sponsors/exhibitors and asking about their products in a low-pressure environment.
- Share your newfound knowledge and networks with your colleagues when you get back to work and help advance the whole organisation.
- Take home new ideas and strategies which you can implement straight away to positively affect your organisation's growth and potential.

Keynote presenters

Tony Coleman

Director Sustainability & Climate Change, Lonergan Edwards & Associates



From 2000 until 2008, Tony was the Chief Risk Officer & Group Actuary of Insurance Australia Group (IAG). Reporting to IAG's CEO, Tony's key responsibility in this role was to ensure that the premiums charged across the group for underwritten risks was adequate to meet all claims and generate an adequate return on capital employed. This involved leading a team responsible for all aspects of enterprise risk management (ERM) across the whole IAG Group. Tony was also an employer nominated director of the IAG & NRMA Superannuation Fund during this period.

In both 2007 and 2008, Standard & Poors (S&P) recognised the quality of the risk management function lead by Tony when IAG was publicly rated by S&P as one of only seven insurers in the world (out of some 250 rated globally) to have "Excellent" risk management processes, the highest ERM rating possible.

Prior to joining IAG, Tony was a senior corporate finance partner of PricewaterhouseCoopers.

In recent years, Tony has also been active in promoting a better understanding of global warming and climate change in government, the community and business by working extensively on this issue with eminent scientists, business leaders and NGOs. This has included working with World Wildlife Fund (WWF) since 2004 as part of the Australian Climate Group and the Australian Conservation Foundation since 2005 on initiatives that have included the Australian Business Roundtable on Climate Change in 2006. Tony also represented IAG as a member of the United Nations Environmental Program Climate Change Working Group and was a contributing author to the IPCC's Report in 2007.

Megan O'Rourke

Special Counsel, Elevista



Megan is a founding member of Elevista and a Special Counsel in Barry Nilsson's Insurance & Health team, with over 15 years' experience in the legal and insurance industries. Megan has extensive experience creating and facilitating training and workshops for risk professionals, legal practitioners, industry groups and other associations.

Megan specialises in the area of risk management having worked as a senior associate for an international law firm, as an in-house lawyer and acting claims manager for a leading international insurance

company, and within a claims management team of an international broker.

Together with Robert Samut she leads Elevista, a Barry Nilsson initiative providing education, training and support to professionals on issues of risk and corporate risk management. Megan also continues to manage a broad range of complex public and product liability and property damage claims.

Megan has managed international claims involving multi-million dollar coverage and defence litigation arising in the USA, Canada, Australia, United Kingdom and South Africa

Scott Clark

President, Risk and Insurance Management Society, United States



Scott Clark is the risk and benefits officer at the school board of Miami-Dade County, Florida, where he has been creating strategic risk programs for the 4th largest school board in the nation for 25 years.

Mr Clark has been a member of the Florida Educational Risk Managers Association (FERMA) since 1989, serving as President from 1991-1992. He received the Lifetime Achievement Award in 2003, and a FERMA Hall of Fame Award in 2010. In 2007, Mr Clark was named to Business Insurance Magazine's Risk Manager of the Year Honour Roll.

Mr Clark currently serves RIMS as President of the Society. He has served on RIMS board since 2000 in various capacities, including Treasurer and Secretary. He has been a member of the Society since 1987 and has served on RIMS Member & Chapter Services and RIMS Safety and Health Committee. He is a founder of RIMS Greater Miami Chapter where he served as president from 1992-1993, 2003-2004 and 2009-2010. He has been the Chair of the Florida Joint Chapters Conference three times, serving in 1997, 2004, and 2010.

He is currently a member of the State and Local Government Benefit Association (1999-present), Public Risk and Insurance Management Association (1988-present) and board member Florida Health Care Coalition (2003-present). Most recently, he was appointed a member of the Miami-Dade County Compensation and Benefits Review Committee.

Adrian Humphreys

Lloyd's General Representative in Australia.



After graduating from Exeter University, Adrian started his career in London working for an international conference company in the Defence sector, specialising in battlefield communications and unmanned Ariel Vehicles.

Adrian moved to financial services in 1998 for KPMG, becoming the Chief Operating Officer for sales, marketing and communications for its Financial Services arm in 2002. After developing a keen interest in the insurance market, Adrian spent three years at Aon Global as Director of Account Development and Retention working on the identification, maintenance and development of Aon's key global accounts and prospects.

Adrian joined Lloyd's in 2007 as a Relationship Manager, tasked with developing and maintaining effective, interactive and mutually productive relationships between Lloyd's and Managing Agents operating on the Lloyd's platform. He also played a key part in the development of the Lloyd's market and the Lloyd's communications strategy.

In recognition of Adrian's broad knowledge gained from working with all areas of the insurance market including new market entrants plus his client retention and business development experience, Adrian was appointed to his current role of Lloyd's General Representative in Australia in July 2010.

Rob Maurich

Chief Risk Officer, CBH Group

Rob Maurich is the Chief Risk Officer at the CBH Group and has been in that role since 2007 and in other risk and treasury roles in the group since 2001. He has over 25 years experience in chartered accountancy, academia and consultancy roles. He is a Fellow Chartered Accountant, Fellow of FINSIA and Graduate of AICD.

Dennis M. Anderson, P.E.

Vice President Engineering Application Manager, FM Global



Dennis Anderson is vice president, engineering application manager, for FM Global. Based in FM Global's Research Campus in West Gloucester, R.I., USA, Anderson is responsible for addressing client, media, and business partner groups to illustrate the science and engineering capabilities, and business relevance of the Research Campus. He is also actively involved in delivering client workshops and seminars and evolving "on-line" and "hands on" training for FM Global engineers and clients.

Appointed to his current position in 2003, Anderson previously served as vice president, chief engineer. He has held several management positions, including vice president of operations engineering and division engineering manager. He joined FM Global in 1977 as a field engineer.

Anderson holds a master's degree in business from Case Western Reserve University in Cleveland, Ohio, USA, and a bachelor's degree in civil engineering from North Dakota State University, Fargo,

N.D. He is a member of the National Fire Protection Association and the Society of Fire Protection Engineers. He is a registered professional engineer in Ohio and Wisconsin. Anderson is a sought-after speaker on property loss prevention topics by professional insurance and engineering organizations, and serves as a primary spokesman for the company relative to science and engineering capabilities.

Sharon Aitken
BA Hons, Teach Cert,
FIRM, MRMIA
President, Risk
Management Institution
of Australasia Limited



Sharon immigrated to Australia from the UK in December 2010 to take up a risk management position at Leighton Contractors Corporate. Her responsibilities include developing and maintaining ERM practices across Leighton Contractors Telecommunications, Mining & infrastructure and Construction divisions. The role incorporates conducting major project reviews, risk management training and risk reviews serving the bid and operational environment for many major clients.

Sharon joined RMIA as a member in January 2011. Sharon has been a member of the Institute of Risk Management in the UK for ten years as a Fellow of the IRM and received an IRM award for legal and contract risk. Sharon has completed a Post Graduate Diploma in risk management and went on to become an IRM examiner. Sharon's

career history includes teacher training and a role as a business studies lecturer. Sharon has made presentations at many risk management conferences and IRM regional groups.

Sharon's CV carries more than a decade of risk management experience. Her final UK appointment was as Senior Corporate Risk Manager in the Governments Nuclear Decommissioning Authority across 24 nuclear facilities, where she engaged with many executive teams and the lower tiers of the business environment. Sharon is also a Director of the Federation of the Asian Pacific & African Risk Management Organisations (FAPARMO), a Director of the International Federation of Risk and Insurance Management Associations Inc (IFRIMA) and Chairs the RMIA Education and Professional Development Council.

Greg d'Arville
Moderator



Greg is a facilitator, journalist and marketer with over twenty years of compliance, governance and risk management experience. Over that time he has advised a wide range of Australian and international organisations on these issues. He has conducted formal audits, reviews and inquiries in many industry sectors and has assessed company programs and procedures for a diverse range of clients.

Greg has been a company director since 1997, with board memberships including the Association of Compliance Professionals

of Australia (now ACI), CAVAL Collaborative Solutions and St Martins Youth Arts Centre. He has been a prominent figure in director and executive education for a number of years and his innovative approach to the design and delivery of curriculum and training in this area has established his reputation as an expert in this field.

A qualified instructional designer, Greg's background in drama, law, economics and marketing has given him a unique skill set that underpins his commitment to effective learning and communication. Bringing regulation to life in real and virtual training rooms is a core activity for the company, and Greg's expertise in this area was developed over eight years as the Director Compliance Programs at the ACCC, and prior to that as the National Technical Training Manager for the Australian Taxation Office.

Greg holds a Bachelor of Commerce degree and a Diploma of Applied Corporate Governance. He is a Fellow of the Australian Institute of Company Directors and a Member of Chartered Secretaries Australia, the Risk Management Institution of Australasia, the Media Entertainment and Arts Alliance and the Society of Corporate Compliance and Ethics. He is also a member of the Australasian Compliance Institute and carries its accreditation as a Compliance Professional.



CONFERENCE PROGRAM

Sunday 20 November 2011

0900–1700	Conference registration				
Additional professional development opportunities					
Various timings	1000–1600 CPRM masterclass: Climate change & managing the implementation of the Australian government's carbon tax	1000–1400 Risk policy forum on Australian & international standards, policies & guidelines	1000–1500 Risk management information systems workshop	1000–1500 Corporate risk managers roundtable <i>Supported by Zurich Australian Insurance</i>	1000–1600 Local government risk managers roundtable
1500–1530	First timers session Chair: Neil Porter, RMIA Director Chapter & Member Services				
1600–1650	RMIA members forum Chair: Sharon Aitken, RMIA National President and RMIA Board in attendance				
1700	RMIA 2011 risk management industry exhibition official opening by RMIA president , Sharon Aitken: industry exhibition				
1700–1800	Happy hour & networking session: industry exhibition				
1915–2230	RMIA 2011 welcome reception "Sporting legends" <i>Supported by RMSS-Reduce Risk</i> Venue: Melbourne Cricket Ground				

Monday 21 November 2011

0730–1700	Conference registration
0730–0825	Marsh business breakfast briefing <i>supported by Marsh</i> Risk management: who's responsible anyway? Business leaders' perspectives on changes in risk management oversight and responsibility As the risk environment surrounding organisations has been changing over recent years, so too have the structures and roles with oversight and responsibility for risk management. In presentations from a Chief Financial Officer, a Non-Executive Director, and a Chief Risk Officer, the breakfast briefing will look at how responsibilities for risk are now shifting in Australian organisations, and what this means for the interaction between the executive team, the Board, the Audit and Risk Committee and the risk management function. The speakers will provide their perspectives in an interactive session that debates and discusses: <ul style="list-style-type: none"> • The chain of responsibility for risk management and oversight; • The role and structure of Audit and Risk Committees; • What boards and committees need and expect from the risk management function; and • Whether organisations have struck the right balance between focusing on financial, strategic and operational risks.
0830–0845	Moderator welcome: Greg d'Arville Official opening of RMIA 2011 Conference by RMIA President: Sharon Aitken
0845–0950	Keynote address: Climate change risk—the key challenges and what risk managers need to know! Tony Coleman Director Sustainability & Climate Change, Lonergan Edwards & Associates This session will provide delegates with an overview of climate change, its economic, social and environmental impacts and the important role risk managers play in helping to mitigate the impacts of climate change on business and communities.
0955–1030	Presentation of Risk Manager of the Year Award 2011 <i>sponsored by Chartis</i> Presented by Michael De Giorgio , Head of Distribution, Chartis Australia Insurance Presentation of Risk Management Student of the Year 'Peter Pope Memorial Award' Presented by Pat Barrett AO, RMIA Patron Presentation of RMIA appreciation certificates Presented by Sharon Aitken , RMIA President
1030–1100	Morning tea: industry exhibition
1100–1130	Directions in risk education & professional development: The skills required for risk managers of the future This session will highlight the findings of the RMIA review of the requirements for CPRM and CRMT certifications, outline the R&D agenda and provide an update on risk education and qualification opportunities currently available throughout Australia, including: <ul style="list-style-type: none"> • Certificate in Risk Management • Diploma of Risk Management • Degree in Risk Management • Graduate Certificate in Risk Management • Graduate Certificate in Strategic Risk Management • Graduate Diploma of Risk Management • Masters in Risk Management Presented by Sharon Aitken , RMIA President & Chair of RMIA's Education & Professional Development Council.
1130–1230	Keynote address: A tweet and a post may harm you the most—managing reputation & cyber risks Megan O'Rourke Special Counsel, Elevista

1230–1330 Lunch: industry exhibition

Concurrent sessions

	Strategy, governance & control	Managing risk	Crisis & business continuity management	Culture	Insurance & risk financing
1330–1415	<p>Strategy, operations and risk— an essential partnership</p> <p>Nick Chipman Partner, PwC Australia</p>	<p>Measuring risk management outcomes—proving the worth of risk management</p> <p>Rod Farrar Director Paladin Risk Management Services</p>	<p>Business continuity management & implementing AS/ NZS 5050:2010</p> <p>Costa Zakis Deputy Practice Leader, Marsh Risk Consulting</p> <p>Peter Daniels Principal, Marsh Risk Consulting</p>	<p>The effects of risk management on business culture</p> <p>Kylie McKiernan Manager, Risk and Insurance, Australian Broadcasting Corporation and Winner— Comcover Awards for Excellence in Risk Management 2010</p>	<p>Business interruption insurance—lessons learnt from the QLD floods & Christchurch earthquake</p> <p>Dr Allan Manning the LMI Group</p>
1415–1500	<p>The Zurich risk room, structured insight into the complexities of global risks</p> <p>Kai Dwyer General Manager, Global Corporate, Zurich Financial Services Australia</p> <p>Daniel Radulovic Proposition Manager, The Zurich Risk Room, Zurich Switzerland</p>	<p>The new work health & safety act—what the new legislation means for you and your business</p> <p>Richard Robinson Director R2A Due Diligence Engineers</p>	<p>Are you ready for live BC cut-over?</p> <p>Scott Lansley Co-founder of BCM in a BOX Pty Ltd and Chris Massey Manager Strategic Risk Projects, Goulburn-Murray Water</p>	<p>Key elements of risk culture</p> <p>Sally Bennett Director Enhance Solutions</p>	<p>South East Asia & Malaysia’s insurance landscape—post the GFC</p> <p>Dwane Feehely Insurance Advisor, Labuan International Business and Financial Centre, Malaysia</p>

1500–1530 Afternoon tea: industry exhibition

Concurrent sessions

	Strategy, governance & control	Managing risk	Crisis & business continuity management	Culture	Insurance & risk financing
1530–1615	<p>Emerging risks and their relationship to strategic planning</p> <p>David Hitchcock Corporate Risk Manager, Endeavour Energy</p>	<p>Measuring risk management performance</p> <p>Bryan Whitefield Director Risk Management Partners</p>	<p>Key learnings from 2011: Managing competing tensions between business, human and political risks during a year of global crises</p> <p>Michael Sharp Regional Security Director, Asia Pacific, International SOS</p> <p>Michael Humphreys Managing Director, Control Risks</p>	<p>Compensating for global virtual team distortions when establishing the context for a risk assessment—a focus on refining risk practice not risk culture</p> <p>Dr Kim Bowman Principal Consultant, Acache</p>	<p>Brand, image & reputational risk—the impact of social media</p> <p>Jason Disborough Chief Commercial Officer, Aon Risk Solutions</p>
1615–1700	<p>Young risk professionals forum</p> <p>Chair: Anthony Ventura CPRM Chief Risk Officer, WorkSafe Victoria and former RMIA Risk Management Student of the Year recipient</p>		<p>Women in risk management forum</p> <p>Chair: Kimberly Turner CPRM Chief Executive Officer, Global Risk Alliance and 2002 Telstra Young Business Woman of the Year recipient</p>		

1700–1800 Happy hour: industry exhibition

CPD POINTS



Full conference 15 points
Full day 12 points
Half day 6 points



Full conference 12 points
Full day 6 points
Half day 3 points



Full conference 12 points
Full day 8 points
Half day 4 points

Tuesday 22 November 2011

0800–1700	Conference registration				
0830–0840	Opening remarks by moderator: Greg d'Arville				
0840–0940	Chief Risk Officer forum: The major challenges facing Chief Risk Officers—what keeps them awake at night? Jason Brown , Chief Risk Officer, QBE Insurance Australia Rob Maurich , Chief Risk Officer, CBH Group Geoffrey Copp , Head of Risk Management & Compliance, Zurich Australia Caroline James , Principal Advisor–Group Risk, Rio Tinto				
0945–1030	Keynote address: Integrated risk management—an enhanced assurance solution Brian Link ERM Director Asia Pacific Region & former Risk Leader & Partner America's Region, Ernst & Young				
1030–1100	Morning tea: industry exhibition				
1100–1145	Insurance market update: Does the insurance market have the capability to fund future business needs? Adrian Humphreys Lloyd's General Representative in Australia Scott Leney Executive Director, Marsh Kai Dwyer , General Manager Global Corporate, Zurich Australia Bob Mann Chief Placement Officer, Aon Risk Solutions				
1145–1230	Keynote address: Emerging risks & control strategies for major property loss prevention Dennis M. Anderson , Vice President, FM Global Research Campus				
1230–1330	Lunch: industry exhibition				
1330–1415	Speaker to be advised				
1415–1500	Keynote address: The risk landscape of the US economy—what the future holds Scott Clark RIMS President				
1500–1530	Afternoon tea: industry exhibition				
Concurrent sessions					
	Strategy, governance & control	Managing risk	Crisis & business continuity management	Culture	Industry perspectives
1530–1615	The globalisation of risk—country and state responses Jeff Floyd Strategy and Risk Adviser, Victorian Managed Insurance Authority	Managing safety risks in the workplace—finally a matter for the boardroom! Barry Sherriff (one of the 3 person Panel that wrote the Report on harmonising safety laws) Maria Saraceni Partner, Norton Rose Australia	Better business continuity planning Leslie Whittet Australian Representative, Business Continuity Institute	Managing critical risk: Integrating risk management with safety health and environmental management Karl Davey Manager, Risk Management, Governance Risk and Assurance, Leighton Contractors Pty Limited & RMIA Risk Manager of the Year 2010	Capital project portfolio optimisation Bill Glyde Principal, Evans & Peck John Hardwick Executive Manager - Maintenance and Replacement Planning, Ausgrid
1615–1700	Incentive structures & risk appetite—the value of governance Timothy Pegley Doctorial Scholar, Macquarie Graduate School of Management	The meaning and evolution of Enterprise Risk Intelligence Andrew Howarth CEO, RMSS	A revolutionary approach to business continuity management Alexandre Medarov ICT Risk Manager, University of Auckland	The psychology for risk Martin Booth Executive Manager - Risk Management, Box Hill Institute of TAFE	Forecasting risk in projects—barriers and commercial value Ian Cashen Senior Associate, Evans & Peck
1705–1710	Final conference wrap-up & summary of proceedings Greg d'Arville , conference moderator				
1710–1800	Happy hour & presentation of exhibitor prizes: industry exhibition				
1930–2330	RMIA 2011 gala dinner “The 60's Revolution” <i>Supported by Riskware...Be Risk Aware</i> Venue: Flemington Racecourse Function Centre				

Conference program disclaimer: RMIA and its contractors have endeavoured to ensure the program proceeds as described. Nevertheless, program changes might be necessary due to factors beyond RMIA's control. RMIA does not accept any liability for program changes. Please refer to www.rmiaconference.com for the latest program information.

ADDITIONAL PROFESSIONAL DEVELOPMENT OPPORTUNITIES

CPRM Masterclass: Climate change & managing the implementation of the Australian government's carbon tax

Tackling climate change may be the greatest challenge of the twenty-first century. This masterclass will focus on strategies CPRMs can draw on to lead and advise their organisation's response. A major element of the workshop will be the Commonwealth Government's Carbon Tax, which will come into effect on 1 July 2012. Climate change, no matter its sources, and the carbon tax will present both threats and opportunities for our local, regional and global communities. A key outcome of the masterclass will be the formulation of the collective voice of CPRMs to inform RMA policy advice to government and industry.

Welcome by Sharon Aitken, RMA National President & Chair of RMA's Education & Professional Development Council.
Facilitator: Bryan Whitefield CPRM and RMA NSW Chapter President.

Date: Sunday 20 November 2011
Time: 1000–1600 hours

Registration fee: AUD120 (open to RMA CPRMs only)

Risk policy forum on Australian & international standards, policies & guidelines

The risk policy forum will provide delegates with an update or 'snapshot' on the status and progress of Australian and international risk management and related standards, policies and guidelines. The forum will be presented by RMA's representatives on the various Australian and ISO standards technical committees and working groups and other policy subject matter experts.

Chair: Peter Wilkinson, RMA Director Policy & Industry Standards & Chair RMA Policy & Industry Standards Committee (PISC)

Date: Sunday 20 November 2011
Time: 1000–1400 hours

Registration fee: AUD30 for member*–Fulltime delegate
AUD99 for member*–Non delegate
AUD199 for non member–Fulltime delegate
AUD300 for non member–Non delegate

Risk management information systems workshop

This workshop is a must for anyone grappling with the task of selecting and implementing a risk management software system for their enterprise risk management (ERM) program. This workshop has been designed to give participants an overview of the requirements of a risk management system and why it is important to align the system with your ERM framework and processes. The workshop will help to explore the myths about risk management information systems and provide solutions to the obstacles faced by risk management practitioners who have been tasked with the challenge of implementing a risk management software system to compliment their ERM approach.

Facilitators: George Pantazis, CEO Riskware and Sean Coody, Partner Deloitte.

Date: Sunday 20 November 2011
Time: 1000–1500 hours

Registration fee: AUD350 for member*–Fulltime delegate
AUD895 for member*–Non delegate
AUD450 for non member–Fulltime delegate
AUD1165 for non member–Non delegate

Corporate risk managers roundtable

Supported by Zurich Australian Insurance

This session is highly interactive and aims to probe a number of key issues faced by corporate risk managers. A range of pre-selected topics will be discussed extensively and each participant is expected to contribute personal insight and experience.

The following issues will be covered:

- What should business look for when appointing corporate risk managers?
- What really keeps the board/CEO awake at night?
- How is risk viewed at different levels within the organisation?
- What really happens in boardrooms when risk is discussed or presented?
- Are emerging issues really treated seriously?
- Do we really have effective risk KPIs?
- How does Australia compare with other nations?

Selected specialists will be invited to speak about their experiences so watch out! Discussions during this session will be used to provide a series of recommendations through various outlets including RMA conference delegates. They will also serve to provide a powerful business case to take back to your own organisations to further embed risk management



Co-Chairs: Kerry McGoldrick, Enterprise Risk Manager, Group Risk, Woolworths Limited & Tarique MacDonald-Razvi, Senior Consultant, MYR Consulting.

Date: Sunday 20 November 2011
Time: 1000–1500 hours

Registration fees:
AUD350 for member*–Fulltime delegate
AUD895 for member*–Non delegate
AUD450 for non member–Fulltime delegate
AUD1165 for non member–Non delegate

Local government risk managers roundtable

A full day of presentations and discussions on the current hot topics in local government including an update on the lessons learnt from the Queensland floods, the difficulty of ERM implementation, business continuity planning and the latest public liability developments.

Chair: Peter Napier, Integrated Risk Management Coordinator, Ipswich City Council.

Date: Sunday 20 November 2011
Time: 1000–1600 hours

Registration fees: AUD350 for member*–Fulltime delegate
AUD895 for member*–Non delegate
AUD450 for non member–Fulltime delegate
AUD1165 for non member–Non delegate

**To claim the RMA member rate you must be a 2011 financial member. To claim the IAA member rate you must be a member of the Institute of Actuaries of Australia. To claim the ACI member rate you must be a member of the Australasian Compliance Institute. To claim the CSA member rate you must be a member of the Chartered Secretaries Australia. To claim the NZSRM member rate you must be a 2011 member of the New Zealand Society of Risk Management. To claim the GRC member rate you must be a member of the Global Risk Community.*

All fees are quoted in Australian dollars and include GST.

Marsh business breakfast briefing

Supported by Marsh



Risk Management - Who's Responsible anyway?
Business leaders' perspectives on changes in risk management oversight and responsibility

As the risk environment surrounding organisations has been changing over recent years, so too have the structures and roles with oversight and responsibility for risk management.

In presentations from a Chief Financial Officer, a Non-Executive Director, and a Chief Risk Officer, the breakfast briefing will look at how responsibilities for risk are now shifting in Australian organisations, and what this means for the interaction between the executive team, the Board, the Audit and Risk Committee and the risk management function.

The speakers will provide their perspectives in an interactive session that debates and discusses:

- The chain of responsibility for risk management and oversight;
- The role and structure of Audit and Risk Committees;
- What boards and committees need and expect from the risk management function; and
- Whether organisations have struck the right balance between focusing on financial, strategic and operational risks.

Date: Monday 21 November 2011
Time: 0730–0820 hours
Cost: AUD65 for fulltime conference delegates
AUD80 for non-conference delegates



SOCIAL PROGRAM



Refreshment breaks and lunches:

Refreshment breaks and lunches will be provided to all fulltime delegates and day delegates on the day of their registration. All refreshment breaks and lunches will be held in the industry exhibition.

Welcome reception: Sporting Legends Supported by



Join colleagues, guests and exhibitors for a warm welcome to the 8th Annual RMIA Conference 2011.

Date: Sunday 20 November 2011
Time: 1915–2230 hours
Location: Melbourne Cricket Ground
Cost: Included for fulltime delegates
Additional tickets: AUD120
Dress: Smart casual &/or dressed as your favourite Sporting Legend

Gala dinner: The 60's revolution Supported by



Come and dine with colleagues and friends, celebrating a successful 8th Annual RMIA Conference 2011 and dance the night away!

Date: Tuesday 22 November 2011
Time: 1930–2330 hours
Location: Flemington Racecourse Function Centre
Cost: Included for fulltime delegates
Additional tickets: AUD180
Dress: 60's revolution ...be creative!

Disclaimer

RMIA and MCI Australia and their agents act only as organisers of these activities and do not accept responsibility for any act or omission on the part of the service providers. No liability is accepted for any inaccuracy, misdescription, delay, damage, death or personal injury.

Happy hours

Each happy hour will provide a wonderful opportunity for delegates to network in a relaxed and friendly atmosphere.

Date: Sunday 20 November 2011
Time: 1700–1800 hours
Location: Industry exhibition
Cost: Included for fulltime delegates
Additional tickets: AUD35

Date: Monday 21 November 2011
Time: 1700–1800 hours
Location: Industry exhibition
Cost: Included for fulltime delegates
Additional tickets: AUD35

Date: Tuesday 22 November 2011
Time: 1705–1800 hours
Location: Industry exhibition
Cost: Included for fulltime delegates
Additional tickets: AUD35

Cancellation policy (social events)

- The conference reserves the right to cancel or vary optional activities if minimum numbers are not reached.
- Regrettably, optional social functions and additional ticket cancellations cannot be refunded if participation is cancelled less than 72 hours prior to the event.

USEFUL INFORMATION

Conference venue

**Crown Entertainment Complex
Level 1, Crown Towers
8 Whiteman Street
Southbank VIC 3006**

This year's 8th Annual RMIA Conference will be held at Level 1, Crown Towers, Melbourne. Situated along the Yarra River in Melbourne's vibrant Southbank precinct, the Crown Towers is close to the CBD, the Melbourne Exhibition Centre and the city's most famous arts and sporting facilities. The conference venue has modern meeting rooms and offers something for all who attend the conference with amazing facilities and superb food. It's also joined to the Crown Entertainment Complex which features a variety of dining options, as well as a 24 hour casino, village cinemas, nightclubs and bars and retail shopping.

Onsite registration

Delegates should register at the conference registration desk within opening hours.

Sunday 20 November 2011 1400–1700
Monday 21 November 2011 0730–1700
Tuesday 22 November 2011 0800–1700
(please note that times are subject to change)

Messages

A message board will be located at the registration desk. Please advise potential callers to contact the RMIA Conference registration desk. No guarantee can be given to deliver messages personally.

Conference dress attire

Smart casual clothing is suggested for the conference during the day. As room temperatures change in individual conference rooms, we suggest you bring warm clothing. Nights can be cool in Melbourne, even in November.

Special diets

Please note that a special diet requirement is when a person chooses to omit certain foods or food groups from their diet on religious, ethical, moral or medical grounds. Provision will be made for food intolerances, halal and Kosher requests, as well as vegetarian/vegan requests. Please note that while we make very effort to provide balanced, healthy meal options, requests for non-specific requirements, such as low glycaemic index or low fat food, cannot be guaranteed. If you have a special dietary requirement, please indicate this on the registration form.

Climate

Melbourne can experience four seasons in one day, with November minimum temperature reaching 11 degrees and maximum 22 degrees. Please make sure you bring suitable clothing for Melbourne's weather.

Disclaimer:

The Risk Management Institution of Australasia Limited and their agents act only as organisers of these activities and do not accept responsibility for any act or omission on the part of the service providers.

No liability is accepted for any inaccuracy, misdescription, delay, damage, death or personal injury.



TRAVEL INFORMATION

Air travel

Flying to Melbourne is easy and there are many international and domestic flights coming in and out of Melbourne. These include the following:

International carriers

Air New Zealand www.airnz.com.au
Qantas www.qantas.com.au
V Australia www.vaustralia.com.au

Domestic carriers

Virgin Australia www.virginaustralia.com
Jetstar www.jetstar.com
Qantas www.qantas.com.au

Travel insurance

The conference managers recommend delegates purchase travel insurance including cover for non-refundable registration fees. The conference managers do not take any responsibility for attendees failing to insure. Delegates must be appropriately covered for travel insurance, including but not limited to repatriation and medical expenses, as well as public liability insurance.

Visa

All travellers to Australia, other than Australian and New Zealand citizens, are legally required to hold a valid visa or electronic travel authority (ETA). It is your responsibility to ensure documentation is correct and completed before you commence your journey. Delegates must register for the event before lodging their visa/ETA application. Following your registration, you will receive an acknowledgment letter. This is all you require from the event manager in order to make your visa/ETA application. We recommend you apply for your visa/ETA at least 10 weeks before you travel (earlier in some cases).

For more information, contact your nearest Australian Embassy/Consulate or view the Australian Department of Immigration website www.immi.gov.au/visitors/.

Tourist refund scheme

International travellers can claim back the goods and services tax (GST) and wine equalisation tax (WET) they have paid on goods bought in Australia that they are taking with them when they leave the country. The tax can be claimed back at international airports and seaports under the Tourist Refund Scheme (TRS), subject to conditions such as an AUD300 minimum purchase from one store. Details on the TRS are available on the Australian customs service web site (www.customs.gov.au) under the customs tax reform heading.

Melbourne airport

For more information on Melbourne airport, including maps, facilities and duty free shopping, please visit their website: <http://www.melbourneairport.com.au/>.

Skybus is the official transit link between Melbourne airport and the central business district. Buses run from every 10 minutes throughout the day and operate 24/7.

- AUD16 Adult, one way. Return AUD26
- AUD36 Family 2 (2 adults and 1–4 children). Return AUD56
- AUD22 Family 1 (1 adult and 1–4 children). Return AUD36
- AUD6 Child (4–14 years), one way

Tickets can be purchased on arrival at the bus stop or purchased online at www.skybus.com.au. On arrival at Southern Cross station in the city, SkyBus provides a complimentary hotel transfer service, subject to availability, during the following hours:

- 0600–2200 Monday to Friday;
0730–1730 Saturday and Sunday,
(excluding Christmas day).

For more information visit:
www.skybus.com.au

Taxi

Taxis have their own taxi ranks or can be hailed from the street. Taxis are available from the ground floor level of Melbourne

Airport, outside the international terminal and both domestic terminals. Expect a taxi fare of around AUD60 for a taxi ride between the CBD and Melbourne Airport.

Melbourne's major taxi companies include:

- **13 CABS**
(13 22 27—within Australia only)
- **Arrow**
(13 22 11—within Australia only)
- **Embassy taxis**
(13 17 55—within Australia only)
- **Silver top taxis**
(13 10 08—within Australia only)

Public transport

Most of Melbourne's main attractions are within walking distance to the conference venue and recommended hotels, however public transport is easily accessible and affordable. For more information on travelling on Melbourne's trains, trams on buses please visit <http://www.metlinkmelbourne.com.au/>. It is advised that visitors purchase tickets called Metcards for use on public transport.

Driving

If you require car hire, many rental companies operate from Melbourne airport. To make a booking prior to your arrival contact:

AVIS car rental: www.avis.com.au

Budget: www.budget.com.au

Europcar: www.europcar.com.au

Hertz car rental: www.hertz.com.au

Red spot: www.redspotcars.com.au

Thrifty car rental: www.thrifty.com.au

For further information on the conference, please contact:

MCI Australia
PO Box 1517
Eagle Farm Qld 4009
Australia



T: +61 3 9320 8657
F: +61 7 3858 5499
E: info@rmiaconference.com
W: www.rmiaconference.com

MCI (www.mci-group.com/australia) designs and delivers exceptional meetings and events for association, corporate and government clients. As the leading globally integrated conference, association and event management company we offer access to the local resources and expertise of our 45 offices across 22 countries. Our focus is on establishing long term partnerships with our clients to deliver an innovative, tailored, best practice solution every time.

ACCOMMODATION



Special accommodation room rates have been negotiated for the event and subject to availability may apply to extended stays. To take advantage of these savings, please read the following information carefully and complete the accommodation booking section on the registration form.

Please note accommodation is strictly limited in Melbourne on the night of Saturday 19 November 2011 due to the President's Cup, so book early to avoid disappointment.

MCI Australia is unable to accept new or changes to existing room bookings after the following release date: 12 October 2011 at 1600 hours Australian Eastern Standard Time. From this time, bookings should be made directly with the hotel or via an accommodation reservation website.

- Rates are per room per night, in Australian dollars, and include GST.
- Room numbers are limited so please ensure you book well before the release date.
- Accommodation cannot be booked unless credit card details are received with your registration form. This information will be passed on to the hotel to secure your booking. The hotel may process the debit immediately or wait until check-out.
- If charges are to be the responsibility of a third party, e.g. the guest's company, please provide the organisers with a letter from the third party stating what charges are to be covered, e.g. accommodation only, meals, mini bar, phone, fax, internet, laundry, all charges, etc.
- A tax invoice/receipt will be issued by the hotel on check-out.
- Cancellations and alterations up to **12 October 2011** are made by MCI Australia. Any cancellations and alterations made by MCI Australia will incur a booking change fee of up to AUD33.
- Guests wishing to cancel or alter bookings after 1600 hours (AEST) on **12 October 2011** should contact the hotel directly. These, and "no-shows", may incur penalties at the hotel's discretion, possibly up to 100% of the accommodation stay.
- Cancellation policies for individual hotels are available on the event website and will be included in your confirmation letter. Please ensure you are familiar with your chosen hotel's cancellation policy.
- Check in prior to 1400 hours is not guaranteed and is at the hotel's discretion, should you wish to guarantee early check you must book and pay for the previous night.
- Hotels will require an imprint of your credit card at check-in for any incidentals.
- If you wish to check-in after 1700 hours you must indicate your arrival time on the form to avoid a "no-show" room release penalty.

Crown Promenade ****

8 Whiteman Street
Southbank VIC 3006

Crown Promenade Hotel is located in Melbourne's vibrant Southbank precinct. Connected to Crown Towers and directly linked to the Crown Entertainment Complex by air bridge, Crown Promenade hotel is ideal for conference delegates. The hotel is also close to the CBD and Melbourne's famous arts and sporting facilities, as well as great shopping and many dining out options. Rooms are stylish, with a contemporary style with facilities including air conditioning, multi-channel TV with in-house movie system and entertainment console, mini bar, in-room dining, over sized shower, internet facility and many more.

Standard room	Please note, the bedding configuration in this room will either be king or queen and cannot be guaranteed	AUD245 per room per night*
----------------------	---	----------------------------

*An additional AUD40 surcharge applies to any booking made at Crown Promenade on the night of Sunday 20 November 2011.



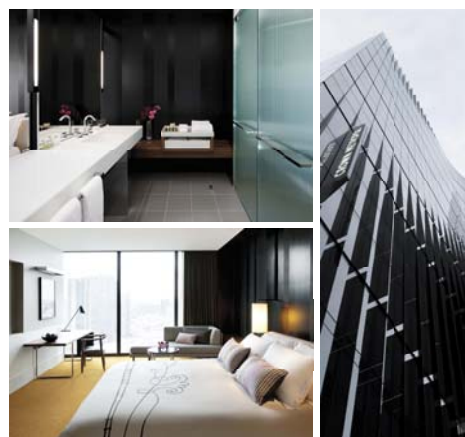
Crown Metropol *****

8 Whiteman Street
Southbank VIC 3006

Fresh and vibrant, the Crown Metropol boasts over 600 rooms all designed by a team of internationally renowned architects. Rooms are spacious and modern and well equipped with air conditioning, LCD TV, mini bar, pay-per-view movies, cable TV, internet facilities and more. The hotel has a sky high day spa, relaxation and rejuvenation floor and serviced business centre, as well as exclusive restaurants and bars. It is also connected to Crown Towers and adjacent to the Crown Entertainment Complex and nearby Melbourne's CBD.

Luxe room	Please note, the bedding configuration in this room will either be king or twin (2 single beds) and cannot be guaranteed	AUD280 per room per night*
------------------	--	----------------------------

*An additional AUD40 surcharge applies to any booking made at Crown Metropol on the night of Sunday 20 November 2011.

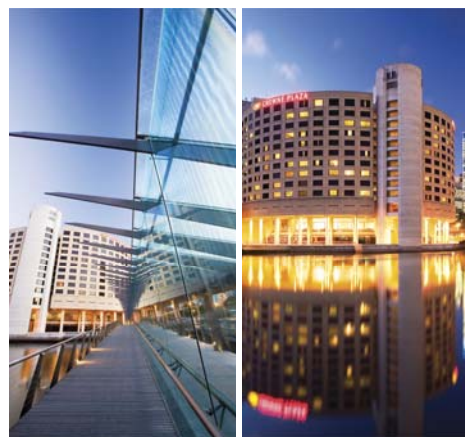


Crowne Plaza Melbourne **** ½

1-5 Spencer Street
Melbourne VIC 3008
Ph: 03 9648 2777

Standard room	single / twin / double	AUD225 per room per night
Executive room		AUD255 per room per night

The Crowne Plaza Melbourne is set on the banks of the Yarra River, in the heart of the Southbank precinct, with a short stroll to Crown Towers. With over 385 newly refurbished rooms featuring air conditioning, cable TV, mini bar and high speed internet access including spectacular views, guests will not be disappointed with their stay at Crowne Plaza Melbourne. The hotel is also close to public transport, Etihad stadium, Melbourne CBD and many shopping hot spots.

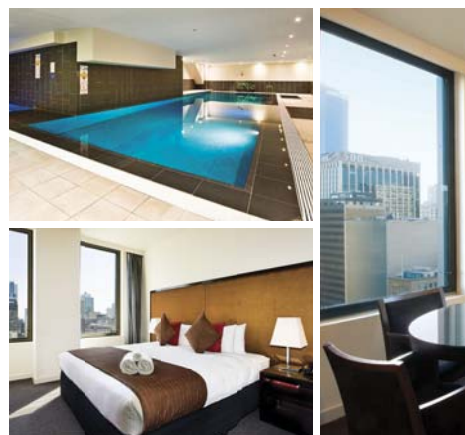


Oaks on Market ***

60 Market Street
Melbourne VIC 3000

Oaks on Market is centrally located Melbourne accommodation, offering beautiful Yarra River views and easy access to all of the city's famous attractions including shopping, dining and entertainment and only a short relaxing stroll to Crown Towers. Oaks on Market comprises 280 luxuriously appointed studio, one and two bedroom, fully self contained apartments with room features including 32-inch flat screen TVs, individual stereo systems, kitchenette, broadband internet, climate control, cable TV and more. Public transport is also right at your door, with tram stops located at the front of the hotel.

Studio apartment	AUD186 per room per night
1 bedroom apartment	AUD235 per room per night
2 bedroom apartment	AUD335 per room per night



REGISTRATION INFORMATION

Please read the following information carefully.
All fees are quoted in Australian dollars and include GST

Registration type	Earlybird (payment received on or before 14 October 2011)	Standard (payment received on or before: 7 November 2011)	Late/onsite (payment received on or after 8 November 2011)
RMIA/IAA/ACI/CSA/NZSRM/GRC member* Fulltime delegate	AUD1,595	AUD1,695	AUD1,895
Non member Fulltime delegate	AUD2,210	AUD2,310	AUD2,510
Fulltime student**	AUD1,190	AUD1,290	AUD1,390
RMIA/IAA/ACI/CSA/NZSRM/GRC member* (Mon or Tues) Day delegate	AUD750	AUD850	AUD950
Non member (Mon or Tues) Day delegate	AUD1,150	AUD1,250	AUD1,350

*To claim the RMIA member rate you must be a 2011 financial member. To claim the IAA member rate you must be a member of the Institute of Actuaries of Australia. To claim the ACI member rate you must be a member of the Australasian Compliance Institute. To claim the CSA member rate you must be a member of the Chartered Secretaries Australia. To claim the NZSRM member rate you must be a 2011 member of the New Zealand Society of Risk Management. To claim the GRC member rate you must be a member of the Global Risk Community.

** Students must verify that they are a fulltime tertiary student by forwarding a photocopy of their student ID to the conference managers.

8th Annual RMIA Conference registration entitlements are as follows:

Fulltime delegate registration:

- Attendance to all conference sessions for the duration of the conference
- Entry into the industry exhibition
- Refreshment breaks
- Lunch on Monday and Tuesday
- Welcome reception
- Happy hour on Sunday, Monday and Tuesday
- Gala dinner
- Delegate satchel and handbook

Day delegate registration:

- Attendance at conference sessions on the day of the registration
- Entry into the exhibition on the day of registration
- Refreshment breaks on the day of registration
- Lunch on the day of registration
- Delegate satchel and handbook
- Happy hour on the day of registration

Please note: The welcome reception and gala dinner are not included in the day delegate registration. Registrants may purchase additional tickets to these functions at the guest ticket price. Please indicate on the registration form if you wish to purchase tickets to these functions

Special registration offer:

Register 30 or more delegates from the same company and receive one free fulltime delegate registration. Completed registration forms and payment for the group must be received at the same time. Please contact guest services in order to take advantage of this offer: registration@rmiaconference.com

Late/on-site registration:

- Refers to those delegates who register after 8 November 2011 or who pay to register upon arrival at the event. Conference materials cannot be guaranteed for late/onsite registrants.

Registration terms and conditions:

Cancellation policy:

- All cancellations, alterations or transfers must be notified in writing to MCI Australia.
- Cancellations received on or before 12 October 2011 will be refunded in full, less 25% of the fee to cover administration costs. No registration refunds will be made after this date.
- As an alternative to cancellation, your registration may be transferred to another member of your organisation, subject to an AUD33 processing fee.
- Please note that registration refunds will not be granted based on inability to obtain a visa. If delegates are unsure of their ability to obtain a visa we recommend they investigate travel insurance.

Payment:

- All prices are in Australian dollars and include GST.
- Payment must accompany your registration form.
- Your registration cannot be confirmed until payment is received.
- Payment must be received by the due date to receive the discount, otherwise the next level of payment will be charged.

- Cheques or drafts must be in Australian currency, drawn on an Australian bank and free of all charges.
- Cheques should be made payable to MCI Australia Pty Ltd.
- Payment by credit card is also acceptable. Please note that debits to your credit card will appear as MCI Australia on your statement.
- Faxed registration forms are acceptable only if payment is by credit card.
- Payment may also be made by electronic funds transfers. Please ensure the amount transferred is equal to the total due INCLUDING any bank charges. To assist in the allocation of your payment, please fax transfer advice to +61 7 3858 5499 immediately after payment to ensure prompt allocation of your funds. Please ensure that your name and complete invoice number are included on the transfer notice.

Bank: **National Australia Bank**

Account name: **MCI Australia**

BSB number: **084 255**

Account number: **59 650 0566**

Privacy and SPAM statement

- Your name and contact information, including electronic address, may be used by parties directly related to the event such as the organisers and approved stakeholders, for relevant purposes such as promotion, networking, and administration of this, and future RMIA events. If you do not consent, please contact info@rmiaconference.com.
- In addition, your name, organisation and country/state of origin may be published on the delegate list which is provided to delegates, exhibitors and sponsors at the event. If you do not wish your details to be included in this list, please contact info@rmiaconference.com.

Intention to photograph

Delegates and others are advised that photographs may be taken during the conference and reproduced for promotional purposes.

Email communication

By providing your email address and facsimile number on the accompanying form you consent to be contacted by these methods in relation to the 8th Annual RMIA Conference and future events of this type.

8TH ANNUAL RMIA CONFERENCE REGISTRATION FORM

Please complete all pages of this form to ensure you are correctly registered.
Once completed please return this form to the conference managers
(please complete one form per person)

8th Annual RMIA Conference
C/- MCI Australia
6 Allison Street, Bowen Hills QLD 4006

Fax: +61 7 3858 5499

Email: registration@rmiaconference.com

Or register online: www.rmiaconference.com



Register by 14 October 2011 for the early bird discount.
Accommodation bookings must be made by 12 October 2011.

Please note accommodation is strictly limited in Melbourne on the night of Saturday 19 November 2011 due to the President's Cup so book in early to avoid disappointment.

1. PERSONAL DETAILS

Title (eg. Prof/Dr/Mr/Mrs/Miss/Ms)		Surname			
Given name					
Organisation					
Position					
Postal address					
Suburb/town					
State		Country		Postcode	
Telephone (work)			Telephone (mobile)		
Fax ()			Preferred name for name badge		
Email					
Are you a member of: <input type="checkbox"/> RMIA <input type="checkbox"/> IAA <input type="checkbox"/> ACI <input type="checkbox"/> CSA <input type="checkbox"/> NZSRM <input type="checkbox"/> GRC					
Membership number:					
Is this your first RMIA conference? <input type="checkbox"/> YES <input type="checkbox"/> NO					
How did you hear about the RMIA 2011 Conference?					
<input type="checkbox"/> RMIA conference email		<input type="checkbox"/> Advertisement—print			
<input type="checkbox"/> RMIA website		<input type="checkbox"/> Advertisement—online			
<input type="checkbox"/> RMIA conference website		<input type="checkbox"/> Word of mouth			

2. EMERGENCY CONTACT INFORMATION

Where will you be staying during the event?

In case of emergency: Contact person:

Contact number:	Relationship to you:
-----------------	----------------------

3. SPECIAL REQUIREMENTS

Please note any specific dietary, wheelchair access or other requirements:

Vegan Gluten free Lactose free Kosher* Halal* Wheelchair access

Other requirement _____

* Please note that Kosher and Halal meals may incur additional charges



4. REGISTRATION

	Earlybird (payment received on or before 14 October 2011)	Standard (payment received on or before 7 November 2011)	Late/onsite (payment received on or after 8 November 2011)
FULL TIME REGISTRATION			
RMIA/IAA/ACI/CSA/NZSRM/GRC member*	<input type="checkbox"/> AUD1,595	<input type="checkbox"/> AUD1,695	<input type="checkbox"/> AUD1,895
Non member	<input type="checkbox"/> AUD2,210	<input type="checkbox"/> AUD2,310	<input type="checkbox"/> AUD2,510
Student**	<input type="checkbox"/> AUD1,190	<input type="checkbox"/> AUD1,290	<input type="checkbox"/> AUD1,390
DAY REGISTRATION			
RMIA/IAA/ACI/CSA/NZSRM/GRC member* <input type="checkbox"/> MON <input type="checkbox"/> TUES	<input type="checkbox"/> AUD750	<input type="checkbox"/> AUD850	<input type="checkbox"/> AUD950
Non member <input type="checkbox"/> MON <input type="checkbox"/> TUES	<input type="checkbox"/> AUD1,150	<input type="checkbox"/> AUD1,250	<input type="checkbox"/> AUD1,350
*To claim the RMIA Member rate you must be a 2011 financial member and provide your membership number. To claim the IAA Member rate you must be a member of the Institute of Actuaries of Australia. To claim the ACI member rate you must be a member of the Australasian Compliance Institute. To claim the CSA member rate you must be a member of the Chartered Secretaries Australia. To claim the NZSRM member rate you must be a 2011 member of the New Zealand Society of Risk Management. To claim the GRC member rate you must be a member of the Global Risk Community.			
**Student must verify that they are a fulltime tertiary student by forwarding a photocopy of their student ID to the conference managers.			
Special registration offer: Register 30 or more delegates from the same company and receive one free fulltime delegate registration. All registrations and payment must be received at the same time. Please contact guest services in order to take advantage of this offer: registration@rmiaconference.com			

5. CONFERENCE ACTIVITIES

Additional professional development opportunities	RMIA/IAA/ACI/CSA/NZSRM/GRC member Fulltime delegate	RMIA/IAA/ACI/CSA/NZSRM/GRC member Non delegate	Non member Fulltime delegate	Non member Non delegate
CPRM masterclass (open to RMIA CPRMs only)	<input type="checkbox"/> AUD120			
Risk policy forum on Australian & international standards, policies & guidelines	<input type="checkbox"/> AUD30	<input type="checkbox"/> AUD99	<input type="checkbox"/> AUD199	<input type="checkbox"/> AUD300
Risk management information systems workshop	<input type="checkbox"/> AUD350	<input type="checkbox"/> AUD895	<input type="checkbox"/> AUD450	<input type="checkbox"/> AUD1,165
Corporate risk managers roundtable	<input type="checkbox"/> AUD350	<input type="checkbox"/> AUD895	<input type="checkbox"/> AUD450	<input type="checkbox"/> AUD1,165
Local government risk managers roundtable	<input type="checkbox"/> AUD350	<input type="checkbox"/> AUD895	<input type="checkbox"/> AUD450	<input type="checkbox"/> AUD1,165
Marsh business breakfast briefing	<input type="checkbox"/> AUD65	<input type="checkbox"/> AUD80	<input type="checkbox"/> AUD65	<input type="checkbox"/> AUD80

All additional professional development opportunities are held on Sunday 20 November 2011, other than the Marsh business breakfast meeting which is held on Monday 21 November 2011.

Social events (see registration entitlements for inclusions)	Fulltime delegate (please tick if attending)	Additional tickets		Total AUD
		Ticket price	Number of tickets	
Welcome reception (Sunday 20 November 2011)	<input type="checkbox"/> Included	<input type="checkbox"/> AUD120		
Happy hour (Sunday 20 November 2011)	<input type="checkbox"/> Included	<input type="checkbox"/> AUD35		
Happy hour (Monday 21 November 2011)	<input type="checkbox"/> Included	<input type="checkbox"/> AUD35		
Happy hour (Tuesday 22 November 2011)	<input type="checkbox"/> Included	<input type="checkbox"/> AUD35		
Gala dinner (Tuesday 22 November 2011)	<input type="checkbox"/> Included	<input type="checkbox"/> AUD180		

6. CONCURRENT SESSIONS (Please indicate your session attendance below)

Monday 21 November 2011

Concurrent session 1330–1415

<input type="checkbox"/> Strategy, operations and risk—an essential partnership <i>Nick Chipman</i>	<input type="checkbox"/> Measuring risk management outcomes—Proving the worth of risk management <i>Rod Farrar</i>	<input type="checkbox"/> Business continuity management & implementing AS/NZS 5050:2010 <i>Costa Zakis & Peter Daniels</i>	<input type="checkbox"/> The effects of risk management on business culture <i>Kylie McKiernan</i>	<input type="checkbox"/> Business interruption insurance—Lessons learnt from the QLD floods & Christchurch earthquake <i>Dr Allan Manning</i>
--	---	---	---	--

Concurrent session 1415–1500

<input type="checkbox"/> The Zurich risk room, structured insight into the complexities of global risks <i>Kai Dwyer & Daniel Radulovic</i>	<input type="checkbox"/> The new work health & safety act—What the new legislation means for you and your business <i>Richard Robinson</i>	<input type="checkbox"/> Are you ready for live BC cut-over? <i>Scott Lansley & Chris Massey</i>	<input type="checkbox"/> Key elements of risk culture <i>Sally Bennett</i>	<input type="checkbox"/> South East Asia & Malaysia's insurance landscape - Post the GFC <i>Dwane Feehely</i>
--	---	---	---	--

Concurrent session 1530–1615

<input type="checkbox"/> Emerging risks and their relationship to strategic planning <i>David Hitchcock</i>	<input type="checkbox"/> Measuring risk management performance <i>Bryan Whitefield</i>	<input type="checkbox"/> Key Learning's from 2011: Managing competing tensions between business, human and political risks during a year of global crises <i>Michael Sharp & Michael Humphreys</i>	<input type="checkbox"/> Compensating for global virtual team distortions when establishing the context for a risk assessment—a focus on refining risk practice not risk culture <i>Dr Kim Bowman</i>	<input type="checkbox"/> Brand, image & reputational risk—The impact of social media <i>Jason Disborough</i>
--	---	---	--	---

Concurrent session 1615–1700

<input type="checkbox"/> Young risk professionals forum	<input type="checkbox"/> Women in risk management forum
---	---

Tuesday 22 November 2011

Concurrent session 1530–1615

<input type="checkbox"/> The globalisation of risk - Country and state responses <i>Jeff Floyd</i>	<input type="checkbox"/> Managing safety risks in the workplace- finally a matter for the Boardroom! <i>Barry Sherriff & Maria Saraceni</i>	<input type="checkbox"/> Managing & containing risk - The supply chain approach. <i>Stewart Hayes</i>	<input type="checkbox"/> Managing critical risk: Integrating risk management with safety health and environmental management. <i>Karl Davey</i>	<input type="checkbox"/> Capital project portfolio optimisation. <i>Bill Glyde</i> <i>John Hardwick</i>
---	--	--	--	---

Concurrent session 1615–1700

<input type="checkbox"/> Incentive structures & risk appetite - the value of governance <i>Timothy Pegley</i>	<input type="checkbox"/> The meaning and evolution of Enterprise Risk Intelligence <i>Andrew Howarth</i>	<input type="checkbox"/> A revolutionary approach to business continuity management <i>Alexandre Medarov</i>	<input type="checkbox"/> The psychology for risk <i>Martin Booth</i>	<input type="checkbox"/> Forecasting risk in projects – Barriers and commercial value <i>Ian Cashen</i>
--	---	---	---	--

7. ACCOMMODATION (Please refer to the RMIA conference website for more details, including cancellation policies)

Please note accommodation is strictly limited on the night of Saturday 19 November 2011 so please book early to avoid disappointment! An AUD40 surcharge applies to any booking at Crown Promenade or Crown Metropol on the night of Sunday 20 November 2011.

- Accommodation **cannot be booked** unless credit card details are received with the registration form.
- Your credit card details will be passed on to the hotel to secure your booking. The hotel may immediately deduct payment from your credit card although full payment is usually reserved for check-out.
- If charges are the responsibility of a third party, please provide a letter from the third party stating what charges are to be covered, e.g. accommodation only, mini bar, all charges, etc.
- Hotels may levy a surcharge on credit card payments.
- A tax invoice for accommodation will be issued by the hotel on check-out.

New accommodation bookings will not be accepted by MCI after 12/10/2011.

From this time, bookings should be made directly with the hotel or via an accommodation reservation website.

Please book the following accommodation:

Check in: / /	ETA:	Check out: / /	ETD:
---------------	------	----------------	------

Venue	Room type	Rate per room per night
Crown Promenade *Please note AUD40 surcharge for rooms booked on the night of Sunday 20 November 2011		
Standard room	Please note the bedding configuration in this room will either be king or queen and cannot be guaranteed	<input type="checkbox"/> AUD245
Crown Metropol *Please note AUD40 surcharge for rooms booked on the night of Sunday 20 November 2011		
Luxe room	Please note the bedding configuration in this room will either be king or twin (2 single beds) and cannot be guaranteed	<input type="checkbox"/> AUD280
Crowne Plaza		
Standard room	<input type="checkbox"/> single <input type="checkbox"/> twin <input type="checkbox"/> double	<input type="checkbox"/> AUD225
Executive room	<input type="checkbox"/> single <input type="checkbox"/> twin <input type="checkbox"/> double	<input type="checkbox"/> AUD255
Oaks on Market		
Studio apartment		<input type="checkbox"/> AUD186
1 bedroom apartment		<input type="checkbox"/> AUD235
2 bedroom apartment		<input type="checkbox"/> AUD335
I would prefer a non-smoking room: <input type="checkbox"/> YES <input type="checkbox"/> NO		
Other special requirements:		
I will be sharing accommodation with (please provide names):		

8. PAYMENT METHOD

- Payment must accompany your registration form
- Conference registration cannot be confirmed until payment is received
- Payment must be received by the due date to receive the nominated discount, otherwise the next level of payment will be charged.
- All prices are quoted in Australian dollars and include GST

Cheque/international bank draft—payable to *MCI Australia*. Payment must be made in Australian dollars payable on an Australian bank and free of all charges.

Electronic funds transfer (EFT) into the following bank account:
Bank: National Australia Bank Account name: MCI Australia Pty Ltd
BSB: 084-255 Account number: 59 650 0566

Credit card—charges as per this form are to be debited

Credit card—accommodation only

MasterCard Visa American Express Diners Club

Name on card

Expiry ____ / ____

Credit card number

<input type="text"/>	<input type="text"/>	<input type="text"/>	<input type="text"/>	<input type="text"/>	<input type="text"/>	<input type="text"/>	<input type="text"/>	<input type="text"/>	<input type="text"/>	<input type="text"/>	<input type="text"/>	<input type="text"/>	<input type="text"/>	<input type="text"/>
----------------------	----------------------	----------------------	----------------------	----------------------	----------------------	----------------------	----------------------	----------------------	----------------------	----------------------	----------------------	----------------------	----------------------	----------------------

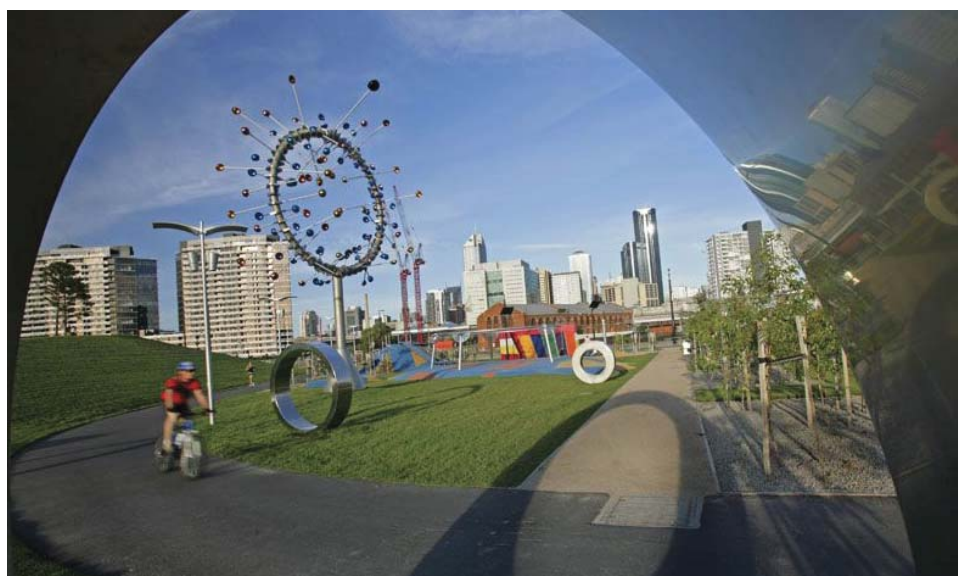
Card holder's signature

Please note that debits to your credit card, excluding accommodation, will appear as *Event Planners Australia* on your credit card statement.

A tax invoice will be forwarded to all Australian delegates on receipt of a completed registration form. ABN: 76 108 781 988.

9. CONDITIONS OF REGISTRATION

By registering for the 8th Annual RMIA Conference delegates agree to abide by the conditions set out in this brochure and on the website.



Ten Integrated Modules

One Risk Intelligent Application

Corporate Governance

Align your activities to achieve your strategic and operational objectives



Health & Safety

Provide employees with a safe and healthy working environment to help meet your legal OHS obligations



Risk Management

Identify, assess, control and manage potential impacts to your organisation



Environmental Management

Minimise your environmental liabilities and maximise your resources to help reduce your environmental impact



Compliance

Meet your regulatory and internal obligations to help achieve legal compliance



Audit Management

Develop, conduct and manage audits to evaluate current performance to achieve compliance



Business Continuity

Scope, plan and prepare for potential disasters or business interruptions



Claims Management

Manage workers compensation claims with advanced claims and case management processes



Incident Management

Log and manage incidents through to resolution to help prevent recurrence



Risk Analytics

Turn data into information to provide a real-time view of organisational performance



riskware has you covered.

Enterprise Risk Intelligence Software

riskware comprises of 10 tightly integrated modules supporting ISO:31000 to manage the full spectrum of your Governance, Risk and Compliance (GRC) responsibilities in a user friendly single consolidated web environment.



Level 1, 123 Camberwell Road
Hawthorn East, VIC 3123
Australia
T: + 61 3 9811 9930
E: sales@pansoftware.com.au

www.riskware.com.au